

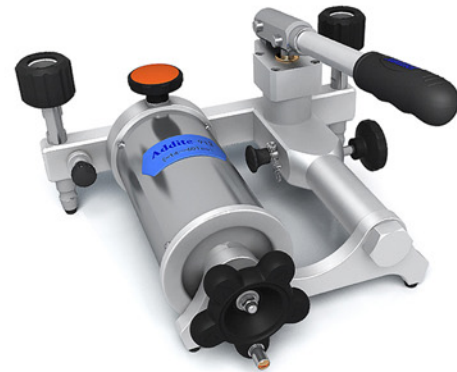
# ADT 912 Low Pressure Test Pump



## OVERVIEW

The ADT 912 Pneumatic Pressure Test Pump is a hand operated pressure pump designed to generate pressure from -14psi (-0.95bar) to 60psi (4bar). A high-quality screw press is designed for fine pressure adjustment, with an adjustment resolution up to 0.01 Pa (0.0001 mbar). The ADT912 is a very stable low pressure calibrator. It makes use of an isothermal bellows chamber which is designed for reducing the possible effects of environmental temperature changes. Most pumps make use of a non-returning valve and are not well insulated resulting in wild fluctuations in pressure with a change in ambient temperature or when the unit is touched. The ADT912 does not use a non-returning valve and is remarkably stable. Two hand-tight quick connectors installed on the pump allow easy connecting and disconnecting to the test pump without the need for PTFE tape or wrenches. The ADT 912 is an ideal comparison test pump for low pressure applications.

Generate 95% vacuum to 60 psi (4 bar) pressure



- Portable
- Great stability and high resolution
- Minimal maintenance
- Hand-tight quick connectors

## FEATURES

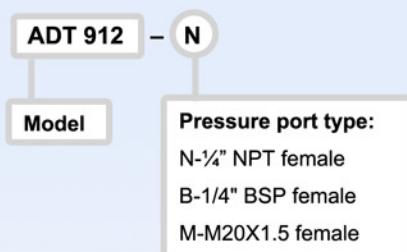
- **Portable**
- **High Resolution**
  - ✓ 0.01Pa (0.0001 mbar)
  - ✓ High-quality screw press for fine pressure adjustment
- **Great Stability**
  - ✓ Isothermal chamber: the pressure chamber is insulated to reduce the influence from environmental temperature changes
  - ✓ Specially designed bellows minimize leakage to guarantee excellent stability
  - ✓ Shut-off valve closes the air in the isothermal chamber during calibration
- **Durable and Minimal Maintenance**
  - Built-in gas-liquid isolator protects the pump from moisture and dirt
- **Easy-to-use**
- **Hand-tight Quick Connectors**
  - Allows easy connecting and disconnecting to the test pump without the need for PTFE tape or wrenches

## SPECIFICATIONS

- **Media:** Air.
- **Generated Pressure Range**  
14 psi (0.95 bar) vacuum to 60 psi (4bar) positive pressure
- **Pressure Resolution**  
0.01 Pa (0.0001 mbar).
- **Material**  
Ram/adapters: SST  
Body: SST/aluminum  
Seals: Buna-N
- **Weight:** 6.2 lb (2.8kg)
- **Connection**  
Hand-tight connectors for both test gauge and reference gauge.  
Test Gauge connection: 1/4" NPT female, 1/4"BSP female, M20X1.5 female  
Reference Gauge Connection: 1/4" NPT female, 1/4"BSP female, M20X1.5 female
- **Dimensions**  
Height: 5.51" (140 mm)  
Base: 10.75" (273 mm) x 10.16" (258 mm)
- **Warranty:** 1 year

## ORDERING INFORMATION

### Model Number



### Accessories (included)

- O-ring 20 pc
- Manual 1 pc

### Optional Accessories

Model number	Description
ADT 912-kit	Test kit for ADT 912 (hose barb fitting, hose, etc)
ADT 102	Adapters and fittings, 1/4"NPT male to various male and female connection (26 pc). More information shown on page 37.
ADT 103	Adapters and fittings, 1/4"NPT (1/4BSP, or M20X1.5 ) male to various female hand-tight quick connectors (10 pc). More information shown on page 37.
9904-912	Carrying Case for one ADT912 pump and two ADT681 gauges or ADT672 calibrators.
ADT100-HTK-4	Hose Test Kit, 5 feet flexible hose, 8000 psi, 1/4NPT male to 1/4NPT female hand-tight quick connector.
ADT100-HTK-B	Hose Test Kit, 5 feet flexible hose, 8000 psi, 1/4NPT male to 1/4BSP female hand-tight quick connector.
Adapters	Choose connection fittings listed on page 37.